

Critique of Trinity Sports “Vision Book”

The referenced Vision Book was originally produced for Mr. Jason Taylor for his company, **Trinity Sports, Inc.** As the firm is experiencing a dramatic transition, Mr. Taylor requested that we study the original book, and in our doing so, we were able to bring to light its strengths and weaknesses, and by circumscribing the original bounds of the project, we were able both to better understand the company’s unique niche, mission, and direction and also to create our task agenda for the project’s strategic rebirth.

Christopher A. Lobas & Associates, Architects

Commentary, format, and design of this critique book is
Copyright © 2017 Lobas Architects. All Rights are Reserved.

CHRISTOPHER A. LOBAS,
ARCHITECT and TEACHER

Licensed U.S. Architect:
National (NCARB), OHIO,
COLORADO, NEW YORK,
UTAH, TEXAS, FLORIDA
Masters of Architecture,
University of Detroit

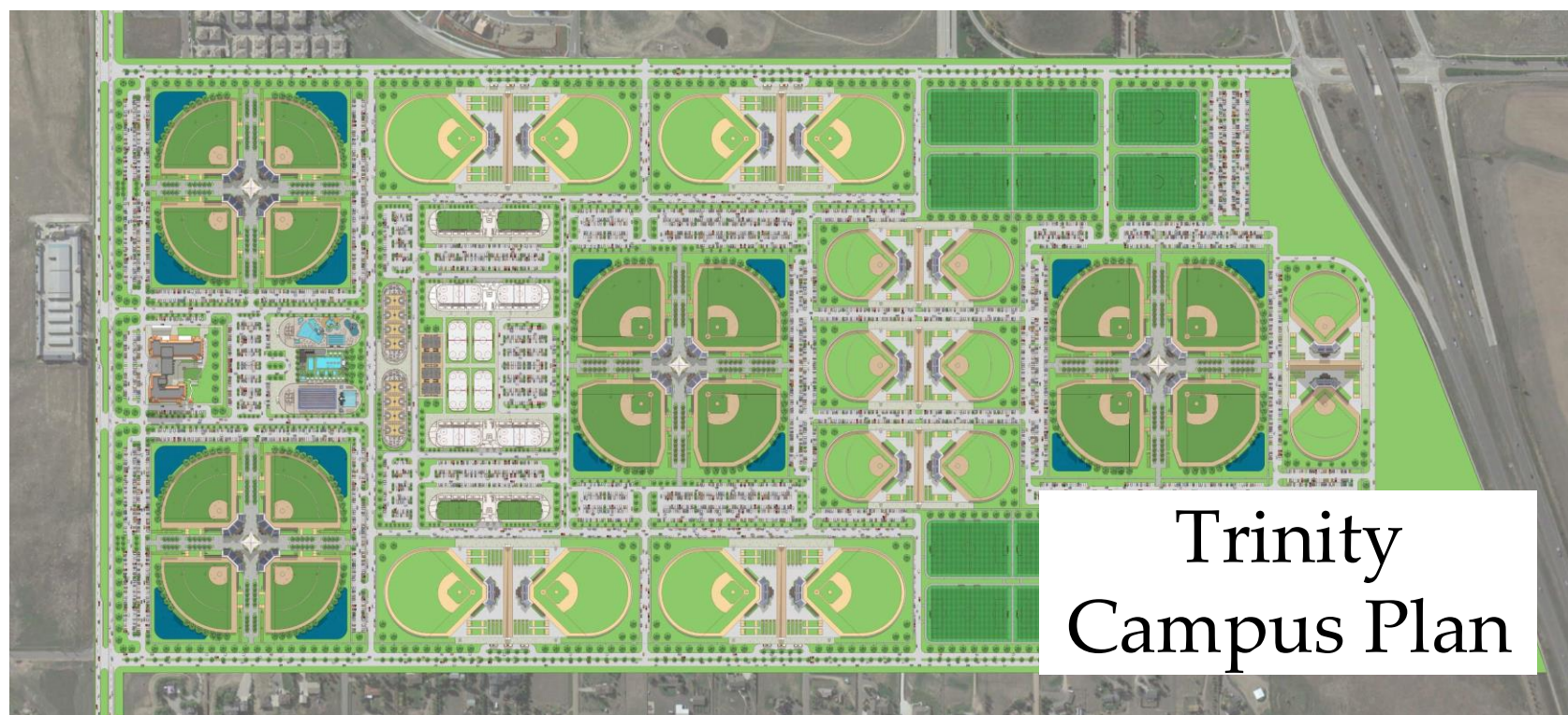
LEED Accredited Professional
cell phone: (216) 200-9781
voicemail: (216) 769-3037

Web: www.lobasarch.com
Email: chris@lobasarch.com

INFINITY SPORTS



Trinity:
Aerial View



Trinity
Campus Plan

MASTER PLAN: + / - ATTRIBUTES

THE OVERALL CAMPUS PLAN shown here, as originally depicted in the Trinity TS Vision Book, was indeed designed in an orderly, logical manner, with various sports fields, courts, and amenities laid out in a homogenous and symmetrically balanced grid.

THE ADVANTAGES to this layout include filling every last square foot of land with function, ergo making for efficient land use.

THE DISADVANTAGES are that the layout is highly regimented, and this lack of variety can become dull, predictable, and ordinary.

A superior approach to this design would be to begin with the campus **CIRCULATION PATHS** as progenitors of the design, with conscious effort made towards creating flow and dynamism, and a strong sense of approach to each grouping of fields and courts.

The design of these circulation pathways would also demonstrate a stronger **HIERARCHY**, with the main thoroughfares for vehicular and pedestrian transport given greater visual emphasis. Another key for a new design would be variety and differentiation in the pathways, which makes for more memorable wayfinding, and greater novelty in player and visitor experience.

Along with the paths guests would discover clear **PLACEMAKERS**, i.e., visual landmarks at each path intersections, connections, and terminus. These could be statuary, garden elements, trellises, towers, or fountains. These elements make the experience of walking through the site more enjoyable and memorable, and also makes it easier to meet up with colleagues and friends at various points in the site.

In turn, “urban artifacts” such as these draw attention to important open spaces in which to either move through or congregate. These places both create a rhythm for walking through the campus, and also punctuate it clearly, with spaces to admire, rest, and gather.

INFINITY SPORTS

PRECEDENT: VILLA RADIEUSE



Trinity:
Aerial View

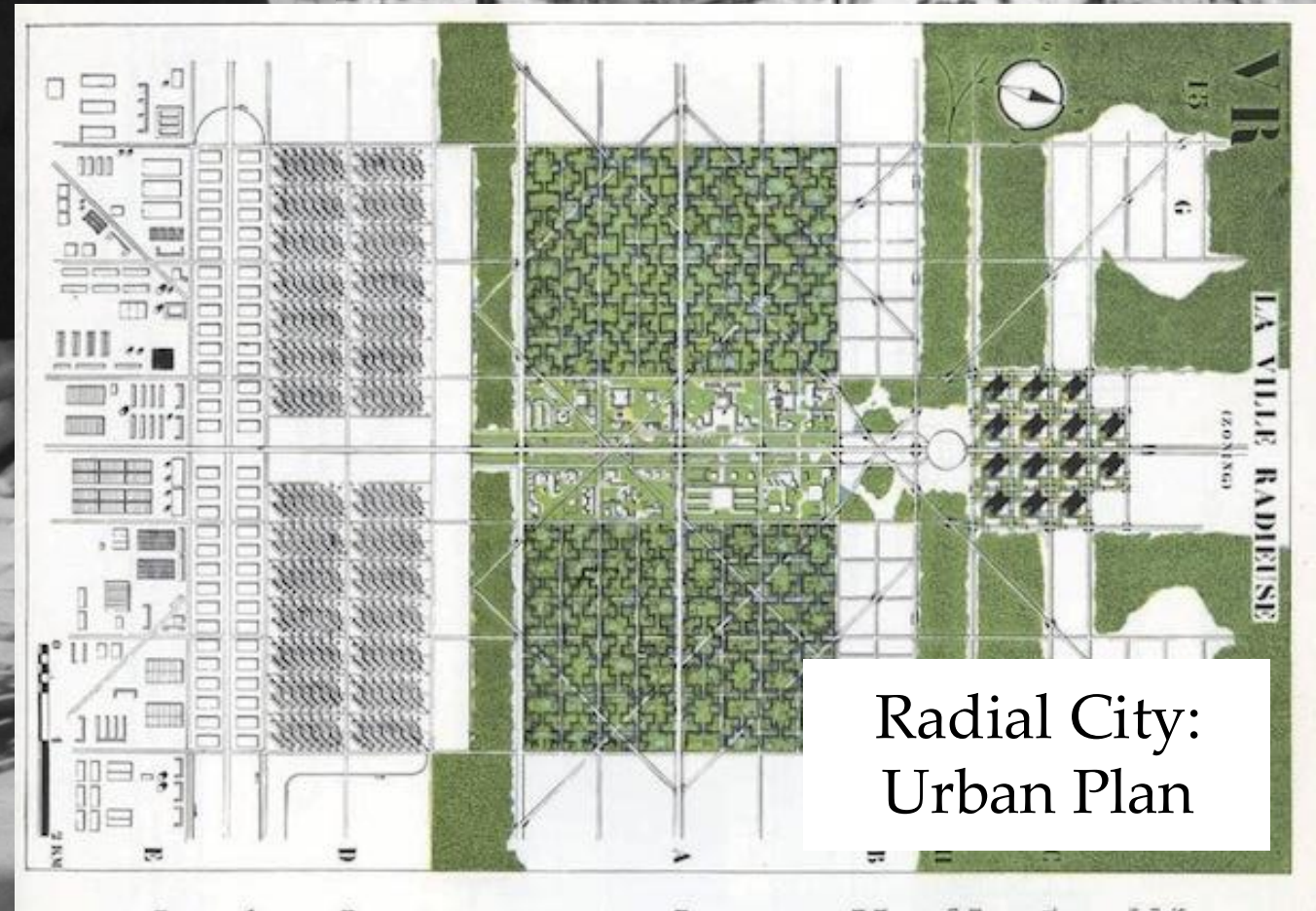


Radial City:
Aerial View



Trinity
Campus Plan

THE OVERALL CAMPUS PLAN from the Trinity TS Vision Book shares a common vocabulary with Le Corbusier's "Ville Radieuse" (the Radiant City), a utopian city with blocks of housing in fields of green space. Again, the advantage is strict order and structure, but what is clearly lost is a connection to existing landscape and naturalistic relationships between the buildings (in this case, the fields and courts), and the site.



Radial City:
Urban Plan



A GENTLER ORDER to design is presented here in the North Myrtle Beach Park & Sports Complex. The park has Baseball, Soccer, and Lacrosse facilities, several trails, and a lake surrounded by foliage.

The overall feeling is of a facilities placed gently in a natural setting, with graceful pedestrian approaches and with parking following along patterns defined by the fields and courts rather than following an imposed, regimented order.





VARIOUS SPORTS CENTERS are included here simply to show some geometric arrangements that can result from "batting for the fences." The common attribute each of these designs possess, in varying degrees, is integration into the natural topography.



INFINITY SPORTS

PLAN STUDY: DIAGRAMMING

VEGETATION



LAND USE



CAMPUS CHARACTER



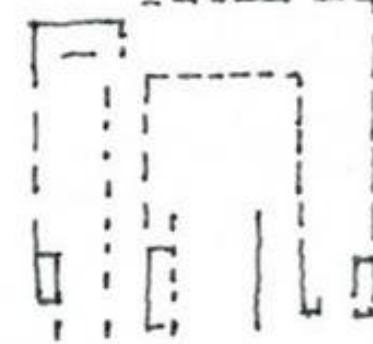
VEHICULAR CIRCULATION



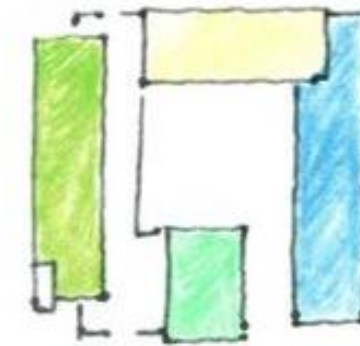
PEDESTRIAN CIRCULATION



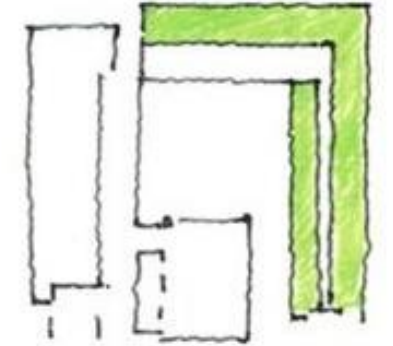
PEDESTRIAN HIERARCHY



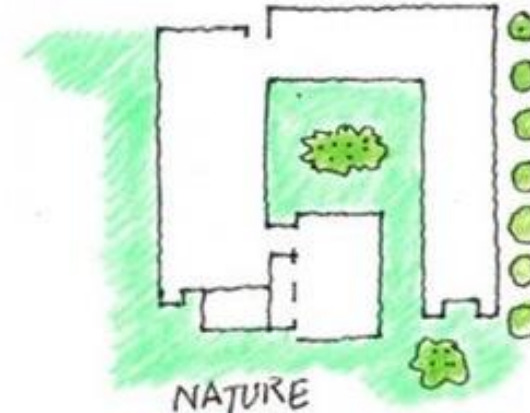
STRUCTURE



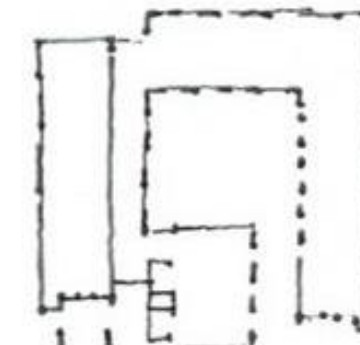
PROGRAM



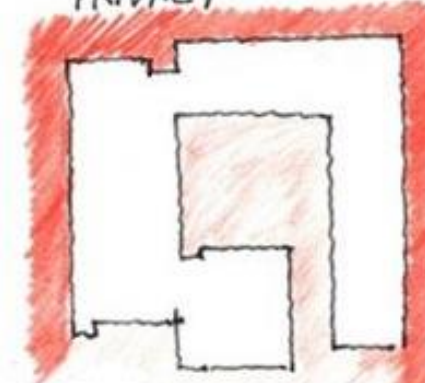
PRIVACY



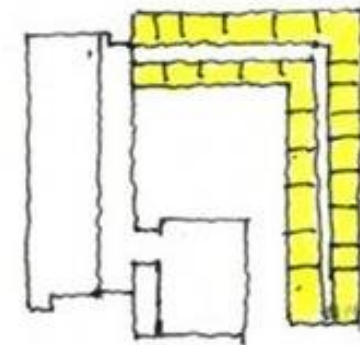
NATURE



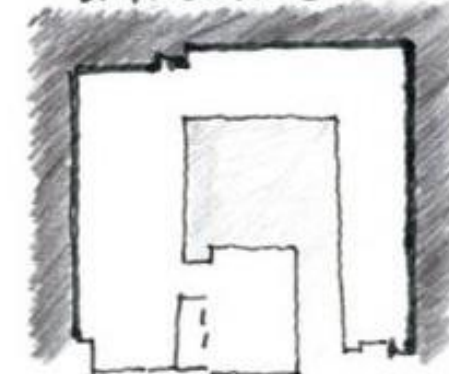
DAYLIGHTING



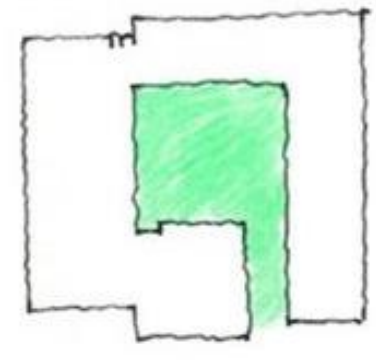
NOISE



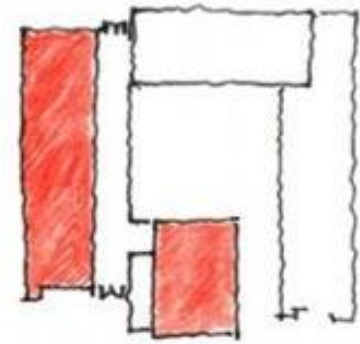
HOME (EVENING)



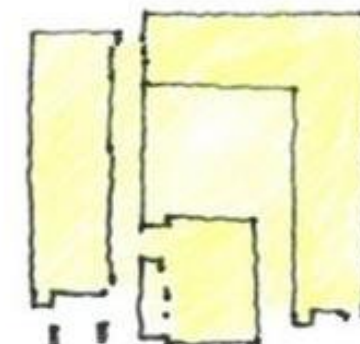
PUBLIC REALM



COURTYARD



SCHOOL (DAY)



PRIVATE REALM

DIAGRAMMING the components of the athletic campus will serve as a solid reference for decision making. We will diagram in a similar fashion to those depicted here in these early design studies by Chas. Sterner (above) and by Rem Koolhaas (to the right) Diagrams will help us determine:

ACCESS and CIRCULATION

We determine the best approach to the site, and the best point of entry, the one that can unfold the experience to the visitor. Then, we compose best movement and flow.

ADJACENCIES and DISTANCES

Based on practical needs, some events and spaces need to be close to each other, and others need to be remote. These proximities are best decided early.

HEIGHT / SPATIAL RELATIONS –

These are critical to establish massing, volumetrics, and overall sightlines / views within the site.



PLACEMAKERS are defined as a certain type of “urban artifact” by architect Aldo Rossi. Placemakers are monuments, some of the most significant types in an urban plan. They indicate a physical sign of the past, and mark a place for a persistent meeting, or a permanent marker of an event.

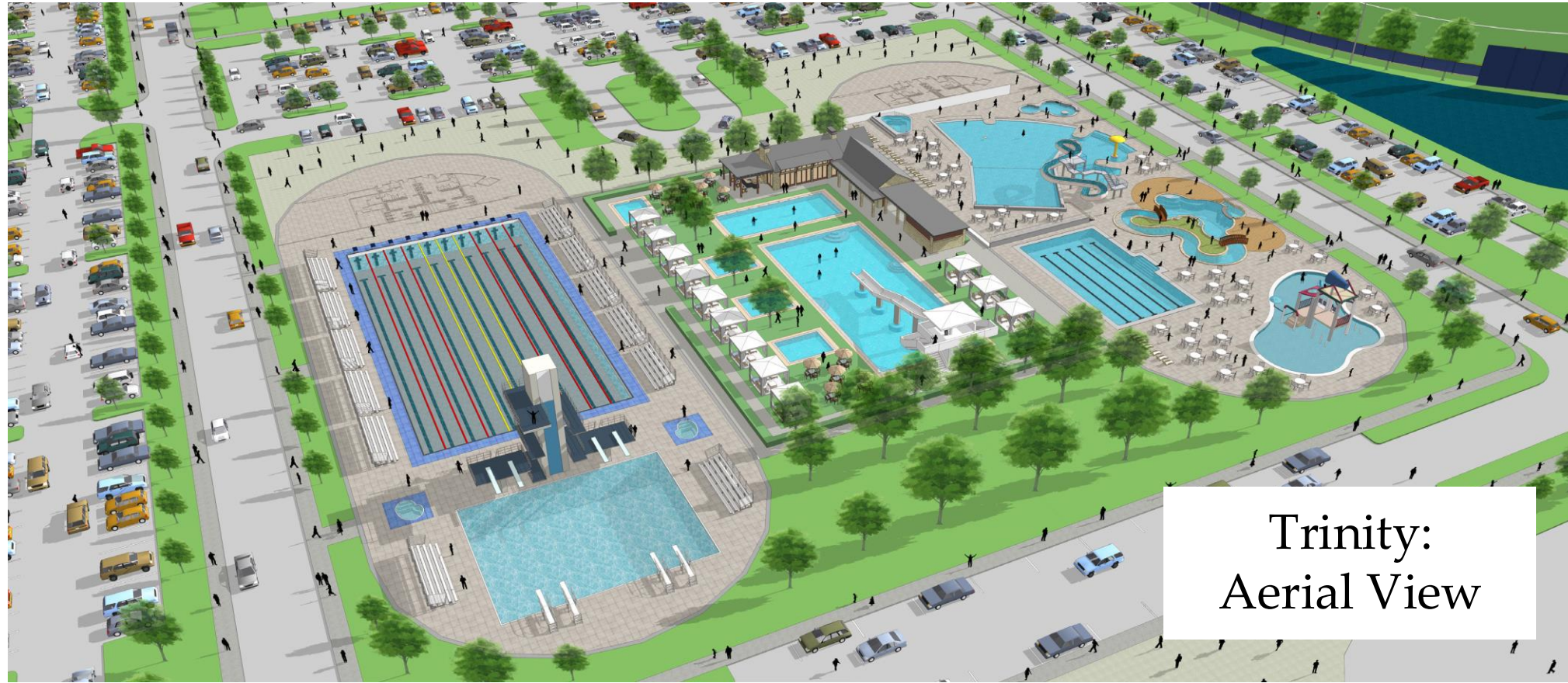
For places in our urban design, monuments would define a place and be useful for giving directions to new arrivals. Also, they are memorable and fun, adding a dimension of texture and character to the site. Animal sculpture (or Sports sculptures), towers, fountains, and trellises would all make good placemakers.



INFINITY SPORTS

PRECEDENTS:

POOL COMPLEX



Trinity:
Aerial View

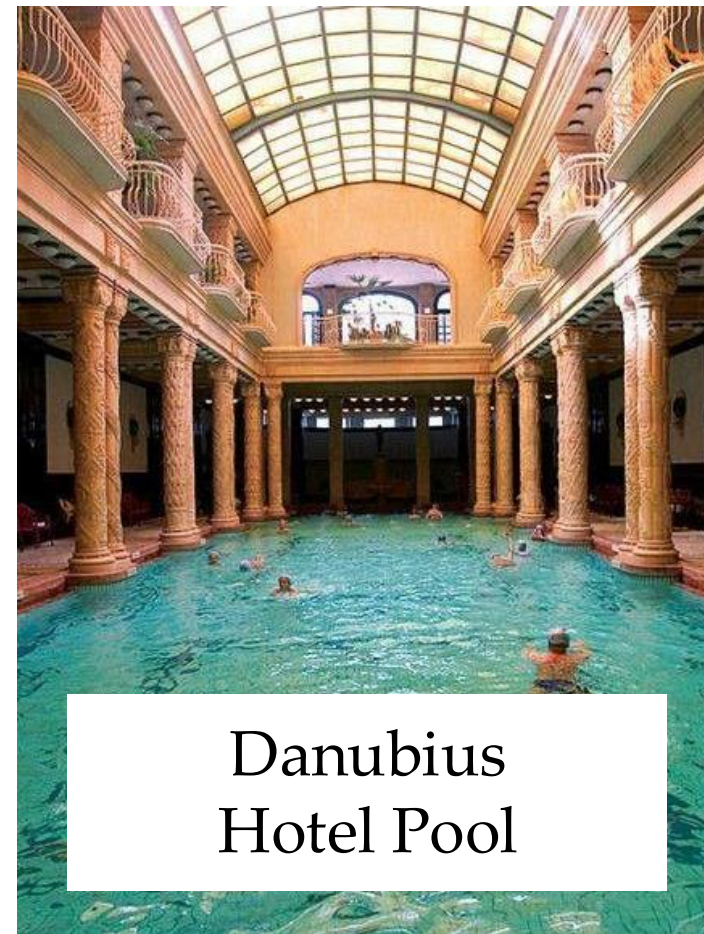


Brewster Olympic
Pool

LOBAS ARCHITECTS works collaboratively with Brian Kennedy, lead aquatic specialist from Ohio Custom Pool & Patio on pools and water parks.



Terme 3000
Spa Pool



Danubius
Hotel Pool



Lagoon-style
Pool

INFINITY SPORTS

ARCHITECTURE: CENTRAL HOTEL



CONCEPT IMAGE here emphasizes outdoor living and the continuous flow of interior and exterior space. The plaza extends from the inside to the out, making a space both informal and elegant.



CONCEPT IMAGE depicts a six-storey hotel with a mansard roof, presumably resembling clay tile or metal. Circulation cores are at the center and the corners, with glass entry points at the corners.

The materials appear to be stone, stucco, glass with aluminum mullions, and clay tile.



CONCEPT IMAGE is taken from a nearby resort. The space is an open plaza with relaxed seating, and views to outward towards nature and also inwards, towards the grand central hall.

The materials palette here is similar to Charles Z. Klauder's materials for CU Boulder, rough-cut sandstone, smooth limestone trim, clay tile roofs, and black steel railings.



INFINITY SPORTS

ARCHITECTURE: TEAM / FAMILY VILLAS



CONCEPT IMAGE here emphasizes RUSTIC character, with indoor / outdoor living, large decks for gathering and barbecues, with trellises as shading elements. The forms are simple blocks of natural materials, wood and stone, with gables intersecting, sheds providing shelter beneath, and strong chimney masses above.



CONCEPT IMAGE of a Texas Hill Country style ranch, suitable for central Texas. The formal palette is again simple and straightforward, with gables crossing, and sheds below, held aloft by colonnades of wood. The materials are stone and wood board and batten, and roofs of tin with standing seams.



CONCEPT IMAGE here is another Texas ensemble, but this one with a determinedly modern expression, made with exposed heavy timbers, cleanly articulated over an indoor / outdoor mass, covered with a standing seam roof and flanked with white limestone. The detailing for this design is impeccably crisp, making for an interesting blend of the earthy and natural with the high-tech.



INFINITY SPORTS

ARCHITECTURE: TEAM / FAMILY VILLAS



CONCEPT IMAGE depicts a modernistic geometric composition, using the traditional and expected palette of natural rustic, and placing the forms together in unexpected ways.



CONCEPT IMAGE of another rustic ranch, but this one dis-assembled in an almost deconstructive manner, with gables split into sheds and interspersed with walls of steel and glass. The roofs are canted at unusual angles, with chimneys also projecting through, and chamfered at the edges. Through all the momentum and angular thrusts, the materials remain staid and secure, stone and wood with metal standing seams.



CONCEPT IMAGE of a rustic colonnade, with a touch of Victorian flavor apparent in the white-painted surfaces. The arcade created here opens to a relaxed, informal paved court with a fire circle in its center.





Copyright © 2017
Lobas Architects.